

TGTIS200 Technical Specification

1 - TECHNICAL SPECIFICATIONS

A. GAS NAILER

Model No.	TGTIS200
Dimensions	
Length	530 mm
Height	100 mm
Width	360 mm
Weight	3.3 kg
Recommended Usage	800/Hr 4,000/Day

Vibration

The vibration/mechanical impact risk is low, it is the users' responsibility to ensure that the operators are not put at risk due to environmental and work piece specifications.

B. FUEL CELL

Model No.	TGC165S
Dimensions	
Height	165 mm
Diameter	32 mm
Capacity	1,000 shots

Fuel cell contains pre-mixed fuel and lubrication. No extra lubrication required.

Warning! Only specified Fuel Cell and Lubricant by Trutek can be used on the tools, please consult the Trutek agents or local distributors.

C. FASTENER

Dimensions	
Insulation Thickness	25-200mm
Pin Head Ø	6.3 mm
Pin Length	40-52 mm
Pin Shank Ø	Up to 3.7mm

Applications	
Insulation Thickness	25-200mm

Only those fasteners which are specified in this specification shall be used in

Trutek Gas tools. The Trutek gas tool and the fasteners specified are to be considered as one unit safety system

The charger and the battery are designed to operate together as one system.

D. CHARGER

Model No.	RLC070220
Input	100 - 240V~ 50/60Hz 25W Max.
Output	7.2V = 2.0A
Charging Time	1 Hour
Battery Type	Trutek B7215VL

E. BATTERY

Model No.	Trutek B7215VL
Type	Li-ion
Output	7.2V =
Capacity	1.5Ah / 10.8Wh

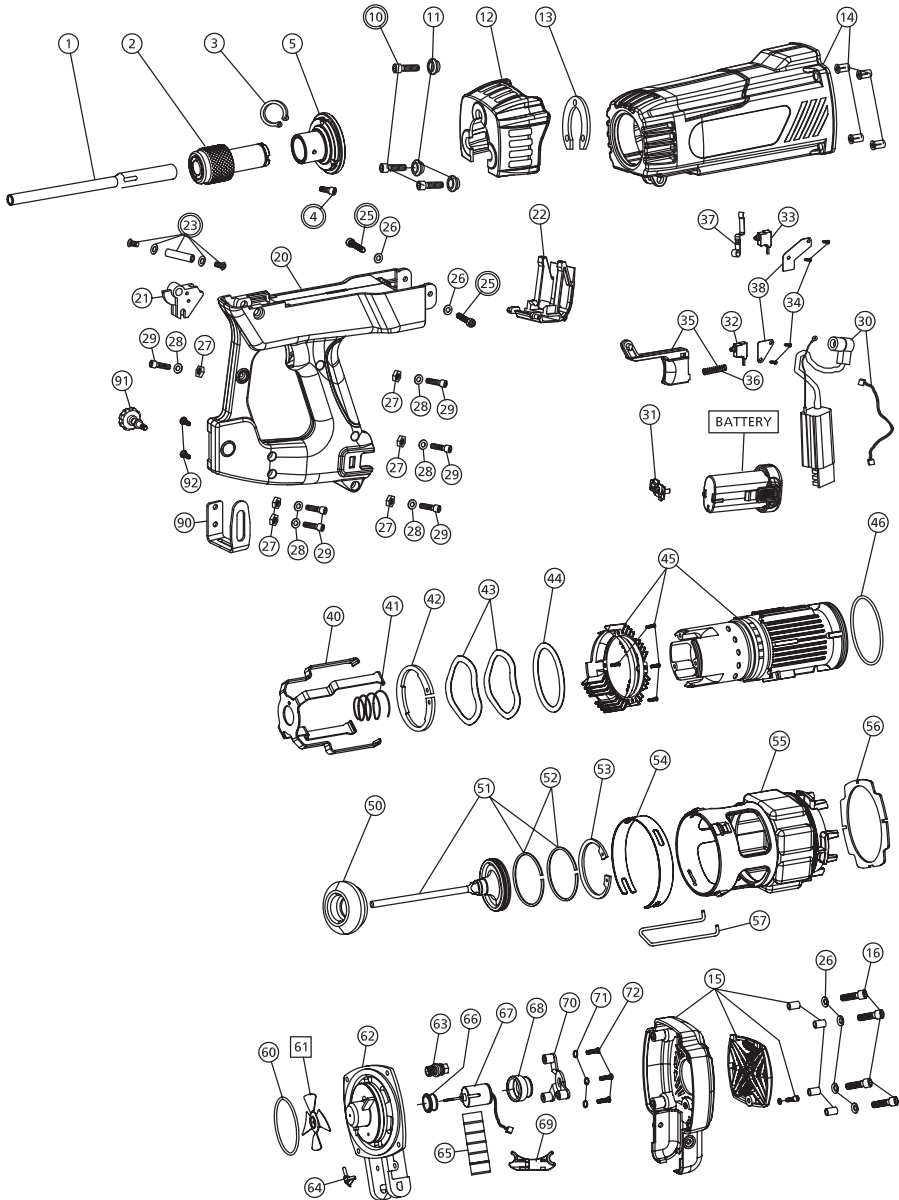
2 - TOOL SERIAL NUMBER

Located on the tool handle near the track connection.

20 YY MM 79 XXXX

YY	- Year of construction (last two digits)
MM	- Month of construction
XXXX	- Tool serial number

3 - PARTS LIST



TGTIS200 Parts List

POS.	CODE	DESCRIPTION
1	NB401B	PIN GUIDE
2	NB3421	GUIDE SLEEVE
3	NB3390	RETAINING RING
4	NB4400	SOCKET SCREW
5	NB3411	NOSE PIECE
10*	NB1040	SOCKET SCREW
11	NB1050	BUSHING
12	NB1061	DUST SHIELD
13	NB1070	SHIELD SPACER
14	NB1Z10	HOUSING
15	NB1Z22	HEAD COVER
16	NB1780	SOCKET SCREW
20	NB1Z33	HANDLE
21	NB1130	FIRING CAM
22	NB1Z40	FUEL DOOR
23*	NB1Z50	BUSHING
25*	NB110A	SOCKET SCREW
26	NB1290	METAL WASHER
27	NB1170	LOCKNUT
28	NB1380	METAL WASHER
29	NB1370	SOCKET SCREW
30	NB1Z63	CONTROL UNIT
31	NB1181	ELECTRODE ASSEMBLY
32	NB1221	TRIGGER SWITCH
33	NB1311	MOTOR SWITCH
34	NB1270	SELF TAP SCREW
35	NB1Z71	TRIGGER WITH SPRING
36	NB1200	TRIGGER SPRING
37	NB1300	SWITCH LEVER
38	NB1261	SWITCH PLATE
40	NB1430	CAGE
41	NB1440	CAGE SPRING
42	NB1450	RETAINING RING
43	NB1470	WAVE WASHER
44	NB1480	VALVE WASHER
45	NB1Z90	CYLINDER ASSEMBLY
46	NB1520	CYLINDER O-RING
50	NB1530	BUMPER
51	NB1ZDB	PISTON WITH RING
52	NB1550	PISTON RING

POS.	CODE	DESCRIPTION
53	NB1560	RETAINING RING
54	NB1571	CIRCLIP
55	NB1580	COMBUSTION CHAMBER
56	NB1600	AIR DAM
57	NB1590	U-WIRE
60	NB1610	HEAD O-RING
61#	NB1620	BLADE ASSEMBLY
62	NB1630	CYLINDER HEAD
63	NB1650	SPARK PLUG
64	NB1660	FUEL NOZZLE
65	NB1670	MOTOR SLEEVE
66	NB1680	MOTOR BUMPER
67	NB1692	MOTOR
68	NB1701	MOTOR GUIDE
69	NB1642	CONNECTOR BOARD
70	NB1711	MOTOR HOLDER
71	NB1720	SPRING WASHER
72	NB1730	ROUND HEAD SCREW
90	170830	BELT HOOK
91	NB1144	LOCKING SCREW
92	NB1142	SELF TAP SCREW

#	Thread	#	Nut
4*	M5 X 8	27	M4
10*	M5 x 25		
16	M5 x 30	#	Washer
23*	M5 x 14	23	12mm
25*	M5 x 14	26	10mm
29	M4 x 16	28	9mm
34	Z3 x 10	71	M4
72	M4 x 20		

* LOCTITE BLUE
LOCTITE RED